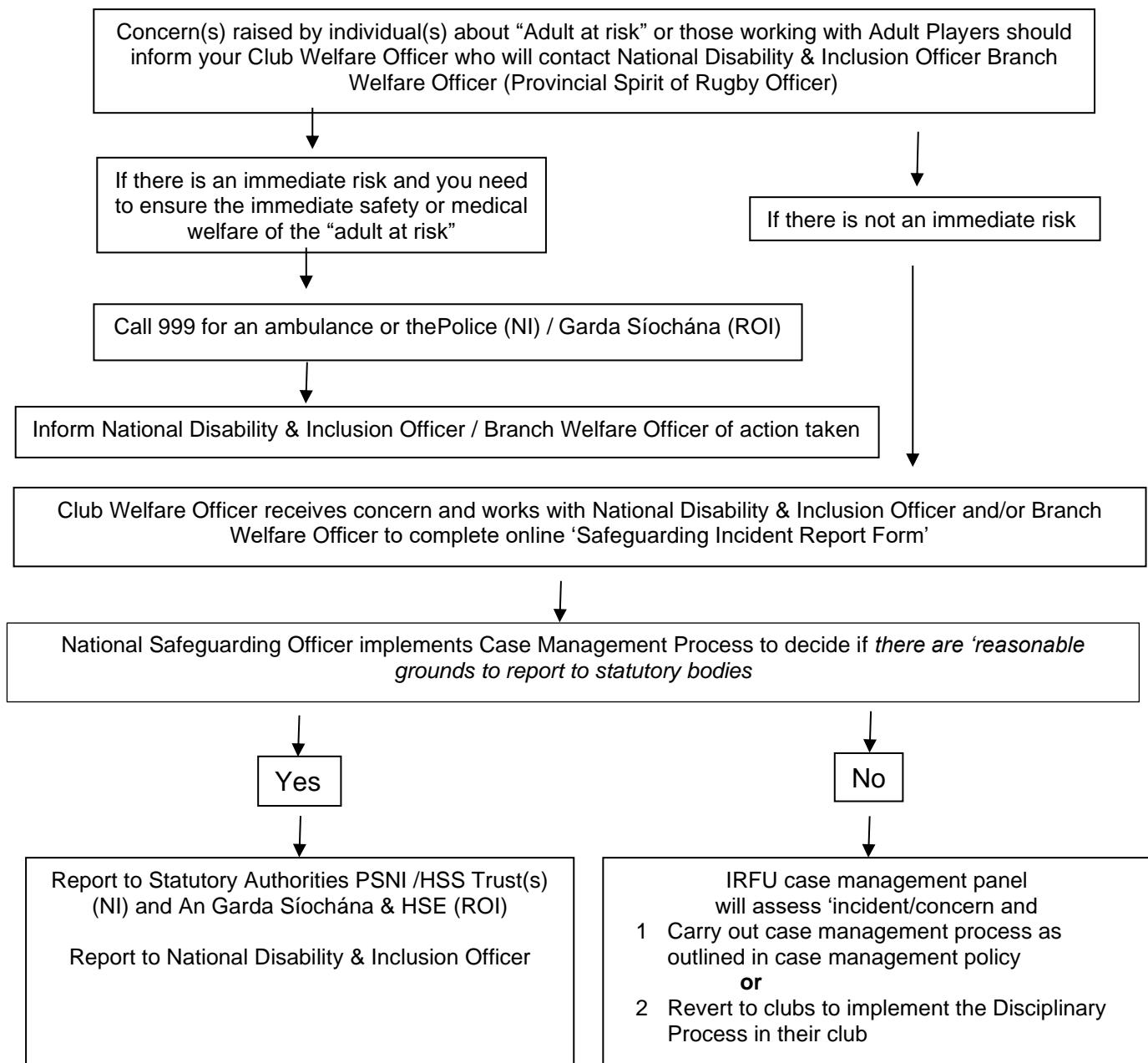




## Do you have concerns about an adult?

### Safeguarding is everyone's responsibility

If you have concerns about an adult's safety and or wellbeing in your care you must act on these, It is not your responsibility to decide whether or abuse has taken place. It is important however, that you report any concerns/suspensions to the appropriate person



### Irish Rugby Football Union

10-12 Lansdowne Road | Ballsbridge | Dublin 4 | D04 F720

T +353 01 6473800 | F +353 01 6473801

[www.irishrugby.com](http://www.irishrugby.com)



IRFU

## Responding to Adult Safeguarding Concerns

There are some key responsibilities and actions for anyone who identifies the possibility of abuse or neglect. These responsibilities must be addressed on the **same day** as the concern is raised.

- **Immediate protection** - Take any immediate actions to safeguard anyone at immediate risk of harm, including summoning medical assistance
- **Speak to the adult wherever it is safe to do so** – get the views of the adult on the concern or incident and see what they would like to happen next. Listen to what they have to say, and ensure they are given the support they need from local help system in the area e.g. Adult Protection Gateway Services (NI) or Safeguarding and protection Teams (ROI)
- **Detection and prevention of crime** - Where there is evidence a criminal offence has taken place, or a crime may be about to be committed, contact the Police or Garda Síochána immediately
- **Record** concerns think who, what, where and when.
- **Inform** National disability & Inclusion officer and complete safeguarding reporting form or Branch welfare Officer or in their absence please contact National Safeguarding Officer and Mandated Person.
- **Report and inform** - Report to Adult Protection Gateway Services (NI) or Safeguarding and protection Teams (ROI) and National Disability & Inclusion Officer as soon as possible, and in all circumstances on the same day as the concern is raised.

## Dealing with a concern in the club

Some concerns may not involve Statutory Authorities; however, the complaint may require a response. In such cases all adults have a responsibility to protect at risk adults from harm. Should you witness or receive information that leads you to believe that a serious breach of this Safeguarding Policy has occurred, you should bring the matter to the attention of the National Disability & Inclusion Officer

- You are not to discuss the matter with persons not already involved, unless required to assist with an investigation of the matter
- The IRFU Case Management process will be implemented
- Complete online safeguarding incident report form and submit to National Disability & Inclusion officer
- Case Management Panel will inform club of the process
- Club Welfare Officer will in some cases deal with the concern using a safeguarding disciplinary panel to decide if codes of conduct have been breached
- National Safeguarding Officer will deal with issues between clubs and inform Branch and Clubs of the concern(s) and action taken where appropriate.
- Clubs or Branches should not carry out their own internal investigations until directed by IRFU case management panel.

**Please note:** Should a person not be happy with the initial outcome of the process they may refer this issue to the National Disability & Inclusion Officer / National Safeguarding Officer

### Irish Rugby Football Union

10-12 Lansdowne Road | Ballsbridge | Dublin 4 | D04 F720

T +353 01 6473800 | F +353 01 6473801

[www.irishrugby.com](http://www.irishrugby.com)



## **Useful Contacts**

### **If you are in Northern Ireland (NI): Adult Protection Gateway Services**

Health and Social Care Trust

Telephone: (Monday to Friday between 9.00am and 5.00pm)

Email: (Monitored Monday to Friday – 9.00am to 5.00pm)

Belfast 028 9504 1744 [adultsguardddutydesk@belfasttrust.hscni.net](mailto:adultsguardddutydesk@belfasttrust.hscni.net)

Northern 028 94413659 [randal.mchugh@northerntrust.hscni.net](mailto:randal.mchugh@northerntrust.hscni.net)

South Eastern 028 9250 1227 [adultprotectiongatewayteam@setrust.hscni.net](mailto:adultprotectiongatewayteam@setrust.hscni.net)

Southern 028 3756 4423 [adultsafeguard.team@southerntrust.hscni.net](mailto:adultsafeguard.team@southerntrust.hscni.net)

Western 028 7161 1366 [adultsafeguarding.referral@westerntrust.hscni.net](mailto:adultsafeguarding.referral@westerntrust.hscni.net)

### **Regional Emergency Social Work Services**

Monday to Friday between 5.00pm and 9.00am, plus Saturday and Sunday (24hrs)

Telephone – 028 9504 9999

### **Police Service Northern Ireland (PSNI)**

In an emergency call: 999

To report your concerns, call: 101

### **If you are in Republic of Ireland (ROI): Safeguarding and protection Teams**

#### **Dublin North, Dublin North City, Dublin North West**

Ms. Mary McNutt, St Mary's Hospital, Phoenix Park, Dublin 20

Tel: [01 7959528](tel:017959528) Email: [Safeguarding.cho9@hse.ie](mailto:Safeguarding.cho9@hse.ie)

#### **Laois, Offaly, Longford, Westmeath, Louth and Meath**

Ms Maura Seabrooke, Ashbourne Primary Care Centre, Unit 12, Killegland Walk, Declan Street, Ashbourne, Co. Meath A84 A627

Tel: 01 6914632 Email: [safeguarding.cho8@hse.ie](mailto:safeguarding.cho8@hse.ie)

#### **Kildare, West Wicklow, Dublin West, Dublin South City, Dublin South West**

Ms. Celine O'Connor, Beech House, 101-102 Naas Business Park, Naas, Co. Kildare

### **Irish Rugby Football Union**

10-12 Lansdowne Road | Ballsbridge | Dublin 4 | D04 F720

T +353 01 6473800 | F +353 01 6473801

[www.irishrugby.com](http://www.irishrugby.com)   



Tel: 045 920410 Email: [Safeguarding.CHO7@hse.ie](mailto:Safeguarding.CHO7@hse.ie)

#### **Wicklow, Dun Laoghaire and Dublin South East**

Mr.Tony McCusker, Ballinteer Health Centre, Ballinteer Avenue, Ballinteer, Dublin 16.

Tel: 01 2164511 Email: [Safeguarding.cho6@hse.ie](mailto:Safeguarding.cho6@hse.ie)

#### **South Tipperary. Carlow, Kilkenny, Waterford, Wexford**

Ms.Geraldine Sutton, HSE Offices, Dublin Road, Lacken, Kilkenny, Co. Kilkenny

Tel: 056-7784325 Email: [Safeguarding.cho5@hse.ie](mailto:Safeguarding.cho5@hse.ie)

#### **Kerry and Cork**

Mr.Darragh Bergin, Unit 24/25 Doughcloyne Industrial Estate, Wilton, Cork. Eircode T12Y821

Tel: 021 4927550 Email: [Safeguarding.cho4@hse.ie](mailto:Safeguarding.cho4@hse.ie)

#### **Clare, Limerick, North Tipperary and East Limerick**

Ms. Maggie McNally, Tyone Health Centre, Tyone, Nenagh, Co. Tipperary

Tel: 067 46470 Email: [Safeguarding.cho3@hse.ie](mailto:Safeguarding.cho3@hse.ie)

#### **Galway, Roscommon and Mayo**

Ms. Pauline Levins, La Nua, Ballybane, Castlepark Road, Galway

Tel: 091 748432 Email: [Safeguarding.cho2@hse.ie](mailto:Safeguarding.cho2@hse.ie)

#### **Donegal, Sligo, Leitrim, Cavan and Monaghan**

Ms. Donna Carroll, HSE Office, Community Health Care Organisation Area 1, Ballyshannon Health Campus, An Clochar, Ballyshannon, Co. Donegal. Tel: [071-9834660](tel:071-9834660) Email: [Safeguarding.cho1@hse.ie](mailto:Safeguarding.cho1@hse.ie)

#### **HSE Information Line**

Monday to Saturday, 8am-8pm

Call: [1850 24 1850](tel:1850241850)

Email: [info@hse.ie](mailto:info@hse.ie)

#### **Garda Síochána**

In an emergency call: 999 or 112

#### **Non-emergency or general enquiries**

For non-emergency or general enquiries, contact your nearest and/or local Garda Station.

#### **Irish Rugby Football Union**

10-12 Lansdowne Road | Ballsbridge | Dublin 4 | D04 F720

T +353 01 6473800 | F +353 01 6473801

[www.irishrugby.com](http://www.irishrugby.com)



IRFU