

This toolkit has been produced to assist sporting clubs and organisations in improving how they manage their waste. The materials focus on waste auditing, waste prevention, waste segregation, communications, and waste management planning. This document contains an overview of each of the assets in the toolkit. Click on any of the icons below to find out more...



WASTE CHARTER

The waste charter has been designed to be used as a commitment and communication tool by clubs. The charter outlines the aims and goals of the clubs and is suitable for display on club noticeboards, in meeting rooms, etc.

[BACK TO TOP](#)



QUESTIONNAIRE

A questionnaire designed to allow clubs to gather initial baseline knowledge around how waste is managed in the club has been produced. Printable and online versions of the questionnaire are available.

[BACK TO TOP](#)

myclub mywaste  **QUESTIONNAIRE**
www.MyWaste.ie

Survey Date: _____

CLUB DETAILS

Club Name: _____ Contact Name: _____
Email: _____ Survey Team: _____
Club Address: _____
No. of club members: _____ No. of pitches: _____
Does your club have a stand? Yes ☐ No ☐ No. of buildings: _____
Does your club have a canteen? Yes ☐ No ☐ Does your club have a changing area? Yes ☐ No ☐
Other? _____ Does your club have offices? Yes ☐ No ☐

WASTE MANAGEMENT DETAILS

Who is the Waste Management Service Provider? _____
How many wheelie bins are provided? Large 1100ltr ☐ Small 240 ltr ☐ Other ☐
Prior to participation in this programme, did you quantify or record waste? Yes ☐ No ☐
How many bins are located within the club grounds: _____
How many bins are designated for: Recycling Food General
If recycling bins are provided, are they used correctly? Yes ☐ No ☐ Unsure ☐
What are the most common waste items: (please tick all relevant options)
Plastic Bottles ☐ Disposable Coffee Cups ☐ Crisp Bags ☐ Fruit ☐ Other ☐
If you use bags to line your bins or collect waste, what colour do you use? Black ☐ Clear ☐ Other ☐ NIA ☐
How many bins have signage: _____

OTHER TYPES OF WASTE

How do you dispose of glass? _____
How do you dispose of light bulbs, batteries, paint, aerosols etc? _____

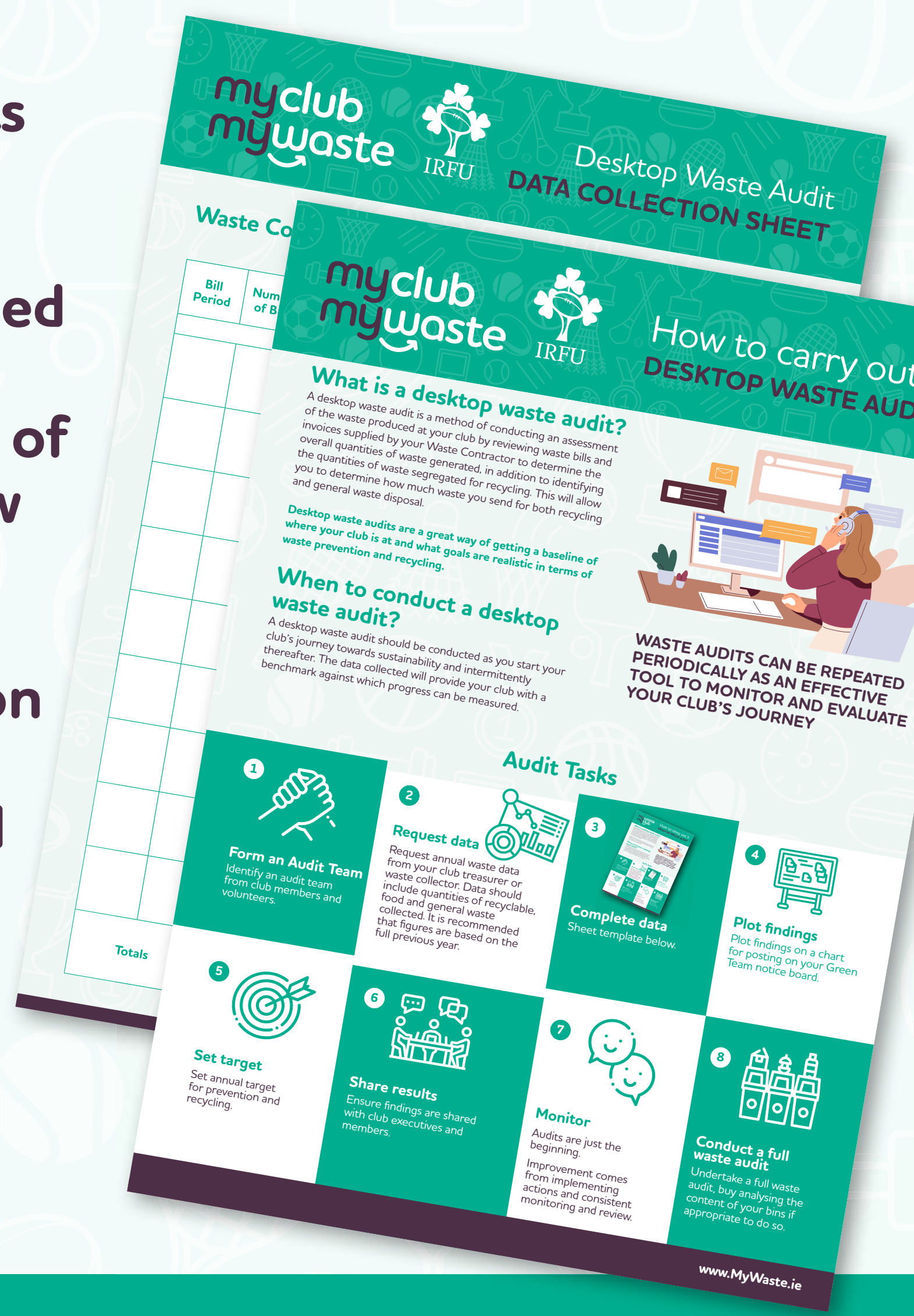
KEY CHALLENGES

Are there any problem areas within you club grounds? _____
What are the key waste issues/challenges your club wishes to address? _____
Are facilities used by any external organisations? _____

DESKTOP WASTE AUDIT

The guidance documents on how to conduct a desktop waste audit outline the steps you need to follow to produce a desktop audit. This type of audit includes the review of waste bills from your waste contractor, which will give you an indication of what your club is currently producing and how you can improve your knowledge of waste management.

[BACK TO TOP](#)



GENERAL WASTE AUDIT

The guidance documents on how to conduct a general or practical waste audit are more in-depth than the guidance on how to conduct a desktop audit. The guidance here outlines the steps to follow to conduct an audit of your club facilities, including a review of the waste receptacles, analysis of the content, presenting findings, and monitoring and evaluation.

[BACK TO TOP](#)



WASTE SEGREGATION

Waste Segregation Guidance:
The guidance on waste segregation outlines various waste streams, including recyclable waste, food waste, general waste, and other specific waste streams, along with instructions on how to segregate these waste types. Additionally, this section provides all the necessary posters and bin labels suitable for use by clubs and sporting organisations.

Materials are available in English, Irish, and bilingual formats.

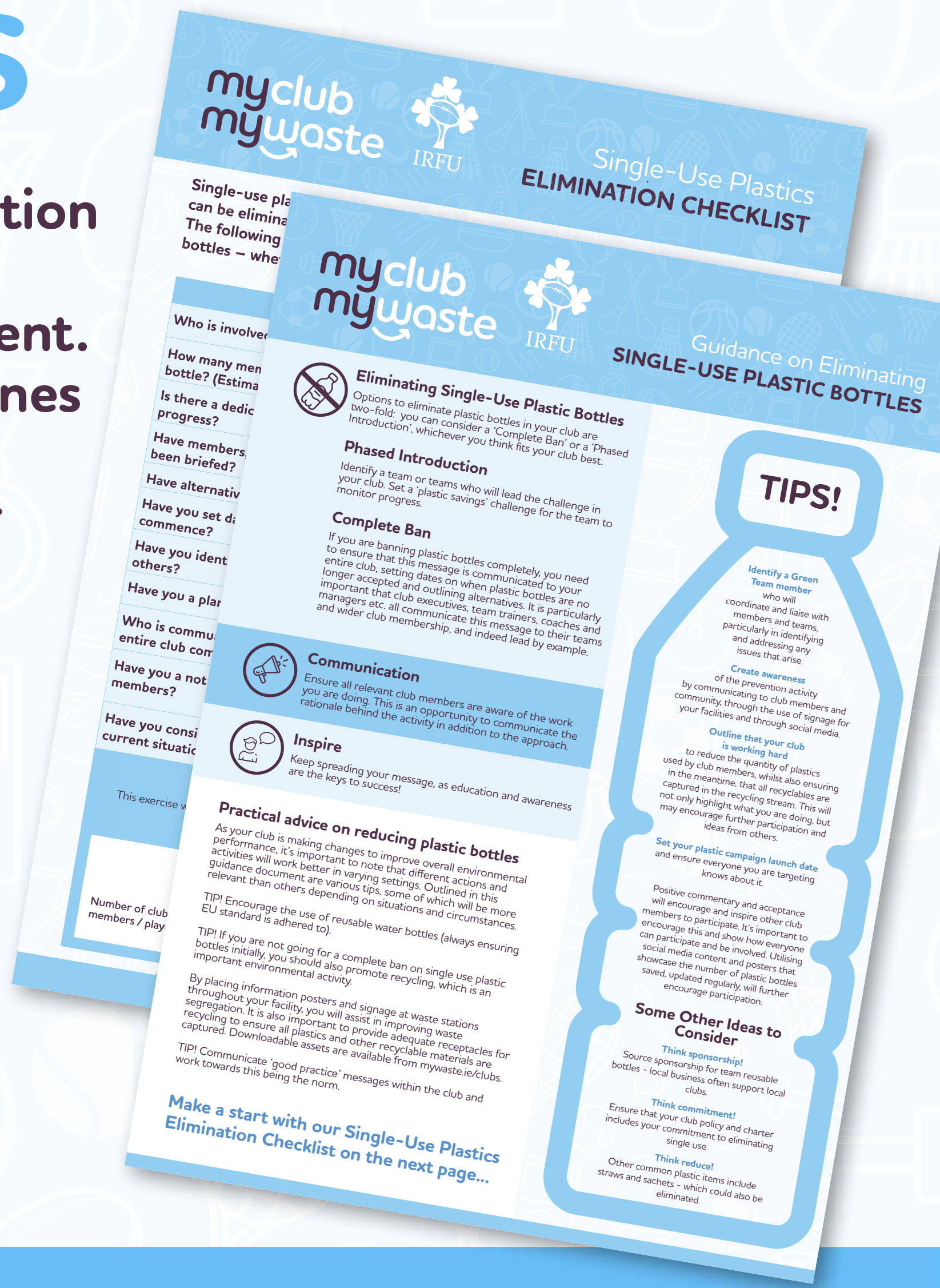
BACK TO TOP



ELIMINATION OF SINGLE-USE PLASTICS

Guidance on the elimination of plastic bottles is contained in this document. The document also outlines how to estimate plastic bottle usage within your club, with an automated usage calculator.

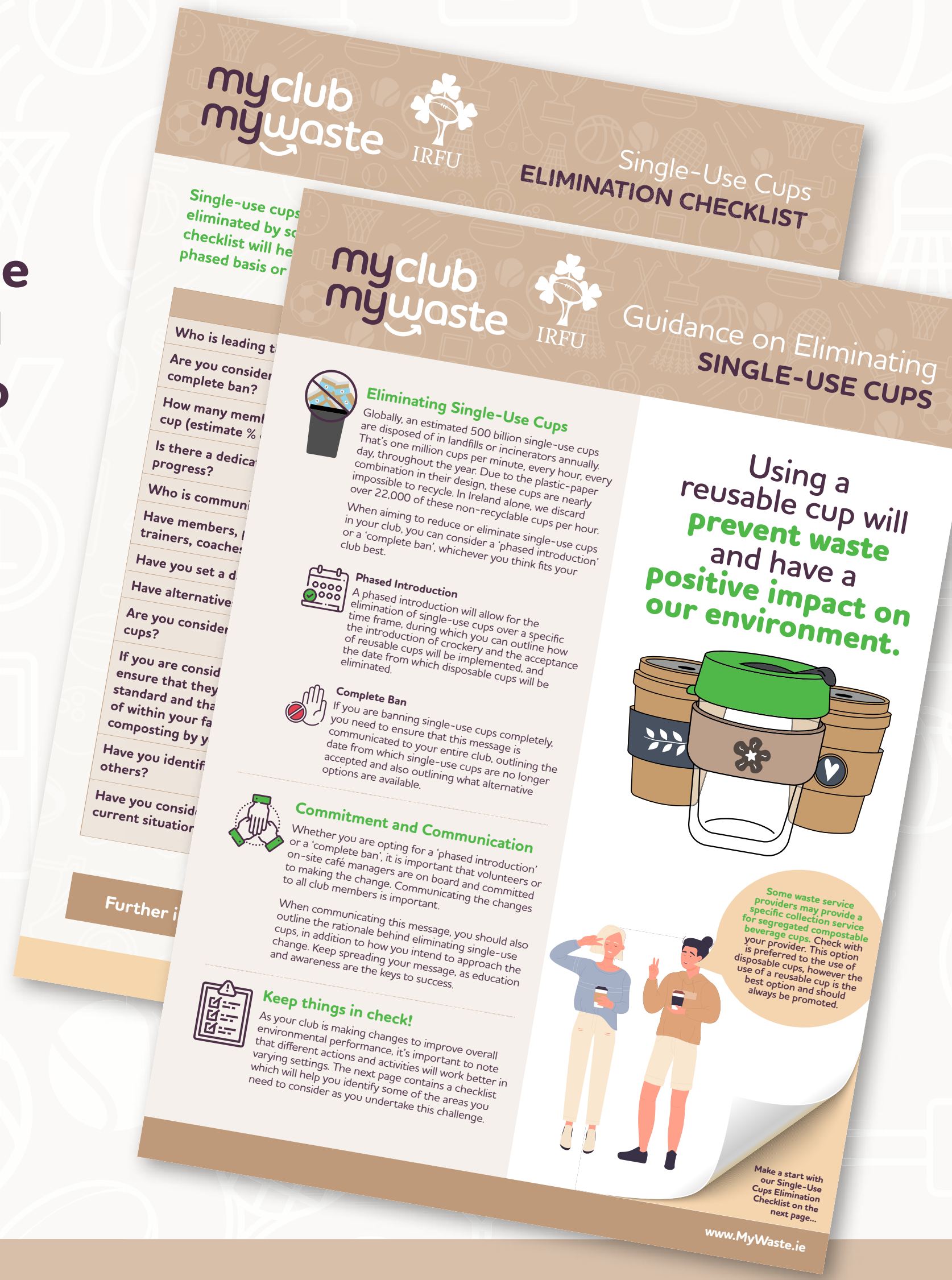
[BACK TO TOP](#)



ELIMINATION OF SINGLE-USE COFFEE CUPS

Guidance on the elimination of disposable coffee cups is contained in this document. It also includes a checklist to help you address the elimination of single-use cups.

[BACK TO TOP](#)



POSTERS

A series of posters has been produced that can be used by clubs and sporting organisations, focusing on Greening Clubs, Single Use, and Waste Segregation.

Posters are available in English and Irish.

[BACK TO TOP](#)



SOCIAL MEDIA CONTENT

A series of social media assets has been produced that can be used by sporting clubs and organisations to promote various Green Club activities. Content focuses on Greening Clubs, Single-Use, and Waste Segregation. A number of assets are editable, and all assets are available in English and Irish.

[BACK TO TOP](#)



WASTE ACTION PLAN TEMPLATE

A Waste Management Action Plan should be completed following the review of the Waste Audit. The Action Plan should set out a list of actions or tasks that the Club has committed to undertake in a specific timespan. Actions can also be included based on a no-cost, low-cost, or high-cost basis. Outlined in the sample Action Plan are typical actions associated with good waste management practices that are relevant to Sporting Club activity.

[BACK TO TOP](#)

myclub
mywaste

IRFU

Waste Management
ACTION PLAN

A Waste Management Action Plan should be completed following the review of the Waste Audit. The Action Plan should set out a list of actions or tasks that the Club have committed to undertake in a specific timespan. Actions can also be included based on a no-cost, low-cost or high-cost basis.

Outlined in the sample Action Plan are typical actions associated with good waste management practices that are relevant to Sporting Club activity.

Action	Action Detail	Person Responsible	Time frame	Cost
Agree Waste Charter				
Establish Green Team				
Complete Waste Audit – Desktop				
Establish Partnerships				
Conduct Facility Waste Audit				
Complete Waste Audit – Desktop or Establish Partnerships				
Conduct Facility Waste Audit				
Undertake Waste Mapping Exercise				
Establish Waste Segregation & Recycling Procedure				
Bin Labelling				
Waste Prevention – Eliminate Single-Use Items				
Communication & Awareness Campaign				
Litter Awareness Campaign				
Action Plan Monitoring				
Investigate Reuse Initiatives				
Investigate Repair Initiatives				
Investigate Green Procurement				
Green Cleaning				
Club Case Study / Challenges & Successes				
Wider Community Participation				

www.MyWaste.ie

GEAR SWAP

The Gear Swap Guide is a one-page document that outlines various exchange actions that can be done within your club.

BACK TO TOP

